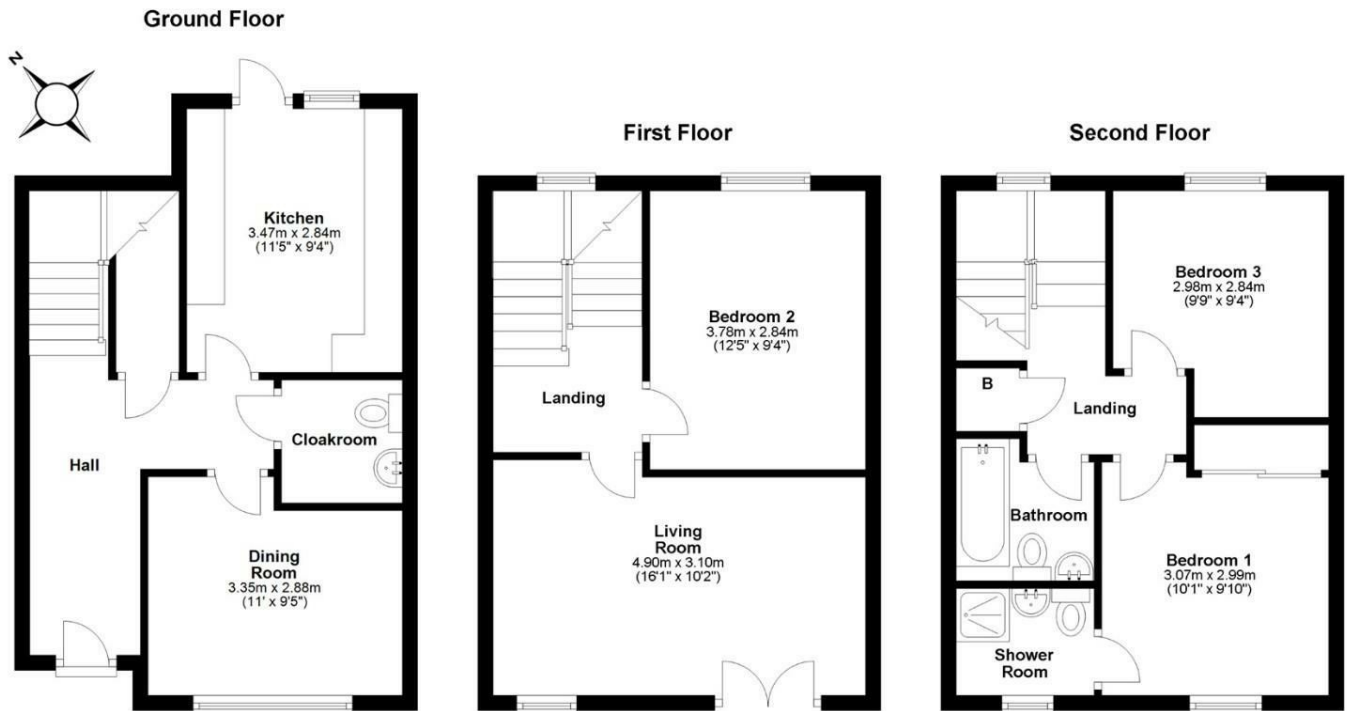


55 Farmers Row, Fulbourn, Cambridge, CB21 5HL

An extremely well-proportioned modern semi-detached family residence, offering flexible accommodation arranged over three storeys, occupying a tucked away position in this quiet residential development with an ease of access to a wealth of local amenities as well as Cambridge.

- Semi-detached house
- 1075 Sqft / 100 Sqm
- 3 bed, 2 bath, 2 recepts
- 0.03 acres
- Built in 2011
- Allocated parking and garage
- Enclosed rear garden
- Gas fired heating to radiator
- EPC - C / 80
- Council tax band - D

£450,000



Approx. gross internal floor area 100 sqm (1075 sqft)

